

MONTHLY MEMBERSHIP PROGRESS REPORT

District 202 E

Results as of: 4/30/2024

GMT:

LOCATION NEW ZEALAND

GMT CA

Clubs			
RESULTS FOR 2023-2024			
QUARTER	NEW CLUB GOAL	NEW CLUBS	DROPPED CLUBS
JULY/AUG/SEPT	0	0	0
OCT/NOV/DEC	1	0	0
JAN/FEB/MAR	0	0	0
APR/MAY/JUNE	0	0	0

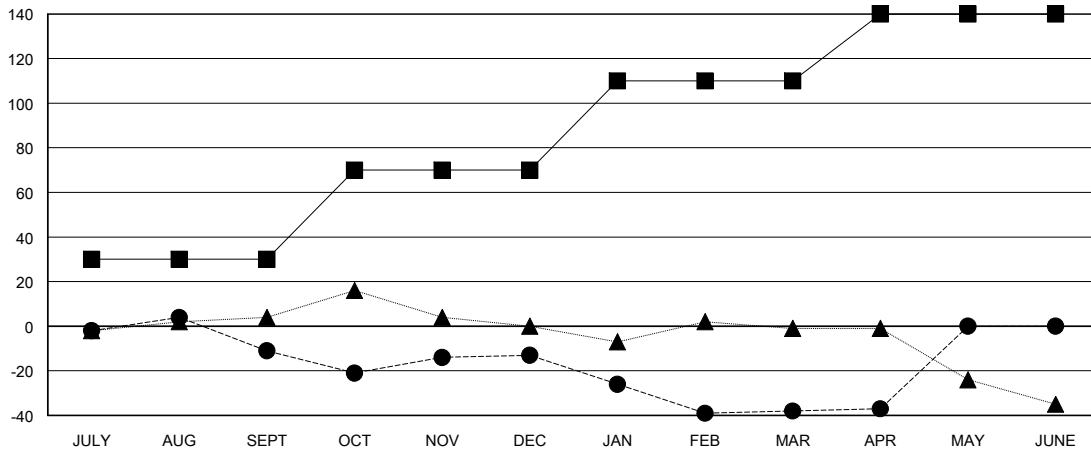
Members			
RESULTS FOR 2023-2024			
QUARTER	MEMBER GROWTH NET GOAL	MEMBER GROWTH ACTUAL	DROPPED MEMBERS ACTUAL (including transfers)
JULY/AUG/SEPT	30	42	44
OCT/NOV/DEC	40	25	21
JAN/FEB/MAR	40	20	41
APR/MAY/JUNE	30	11	10

GOALS AND ACTUAL NEW CLUBS CUMULATIVE



- - CURRENT YEAR GOALS FOR NEW CLUBS
- - CURRENT YEAR ACTUAL NEW CLUBS
- ▲ - LAST YEAR ACTUAL NEW CLUBS

GOALS AND ACTUAL MEMBERS CUMULATIVE



- - MEMBER GROWTH NET GOAL
- - MEMBER GROWTH ACTUAL
- ▲ - LAST YEAR MEMBERSHIP ACTUAL

DROPPED CLUBS: 0	29 CLUBS OF 42 ADDED 1 OR MORE NEW MEMBERS	GENDER DISTRIBUTION MALE 796 (69.95%) FEMALE 342 (30.05%)
DROPPED MEMBERS DECEASED 12 CLUB CANCELLED 0 OTHER 104 TOTAL 116	CLICK HERE FOR CUMULATIVE MEMBERSHIP DATA	TOTAL FAMILY UNIT MEMBERS 62 FAMILY MEMBERS PAYING HALF DUES 31